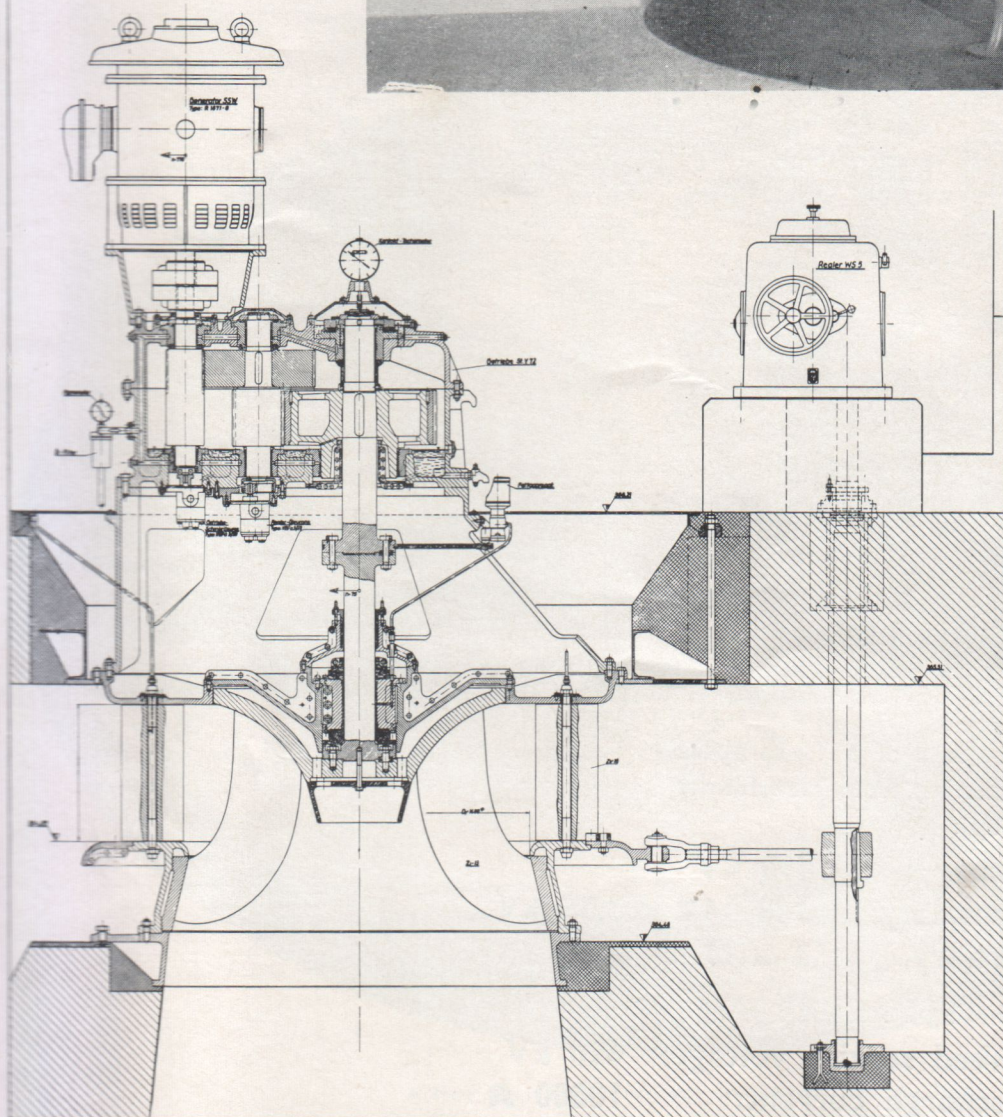
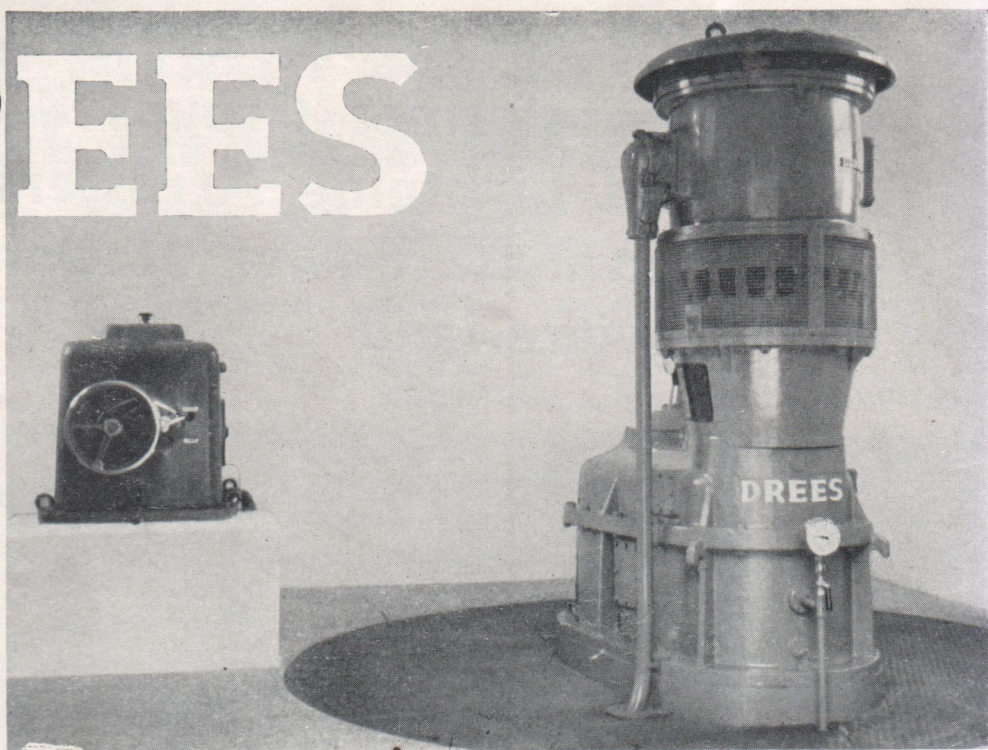


DREES



**DESIGNS AND
CONSTRUCTS:**

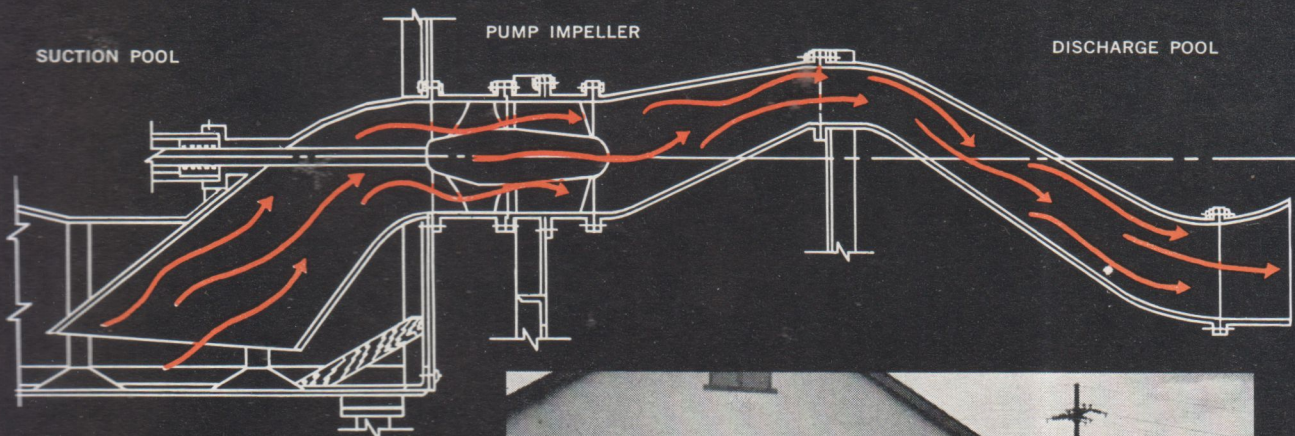
**FRANCIS,
KAPLAN,
AND
PELTON
TURBINES**
WITH HORIZONTAL
AND VERTICAL
SHAFTS

HYDRAULIC SPEED,
HEAD WATER LEVEL
AND
SAFETY GOVERNORS

FLOW CONTROL
EQUIPMENT
GEARS

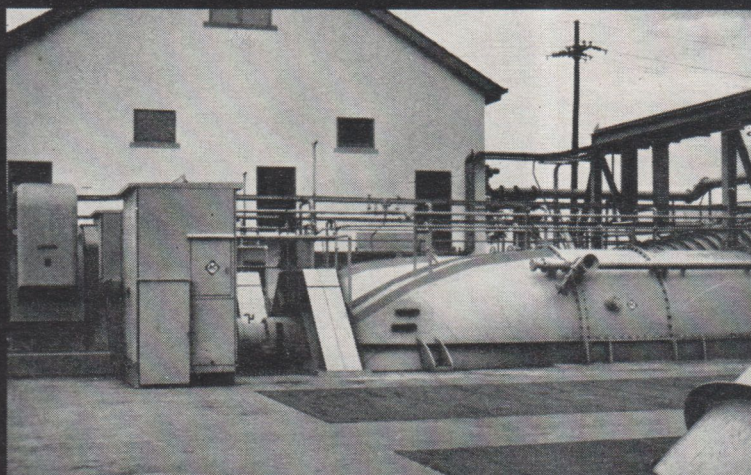
DREES + CO. GMBH

WERL, WESTFALEN
WESTERN GERMANY



Sketch of model built for testing the two fixed-blade axial pumps, diffuser and water passages. As the world's largest builder of hydraulic turbines, A-C has unique facilities at its York Works for constructing and testing exact scale models, including full water passageways.

One of two A-C axial-flow pumps installed at City of New Orleans No. 4 Drainage Pumping Station. ▶



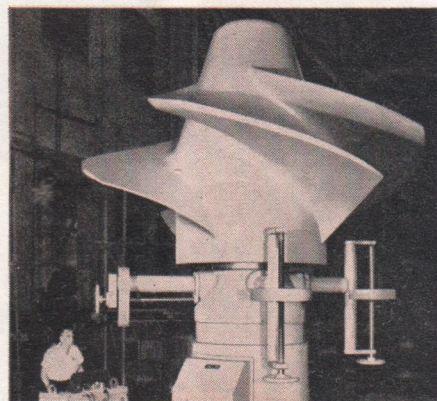
The staff members of the Sewerage & Water Board of New Orleans state: **"Pump-ability exceeds guarantees"**

Guaranteed performance was exceeded on the new horizontal axial-flow pumps for New Orleans No. 4 Drainage Pumping Station even *before actual manufacture*. A complete model of the water passages, pump impeller and diffuser was fashioned to precise 1/11th scale at the laboratories of Allis-Chalmers York Works. Testing demonstrated that discharge and efficiency were even more than promised . . . in excess of all guarantees by a substantial margin.

Both these pumps move 1025 cubic feet per second (460,000 gpm) under a pool-to-pool head of 12 feet. Power supplied by electric motor through a speed reducer drives each pump at 100 rpm.

Allis-Chalmers will help when you wish to explore pumps, valves and other vital elements for sewage and flood control, low-head pumped storage, or irrigation. Contact your local A-C office for information, or write Allis-Chalmers, Milwaukee 1, Wisconsin.

A-1597



Massive precision and unusual refinement of Allis-Chalmers components are revealed here in the dynamic balancing of the 15.5-ton pump impeller for one of the New Orleans pumps. Field operation demonstrated freedom from vibration.

ALLIS-CHALMERS

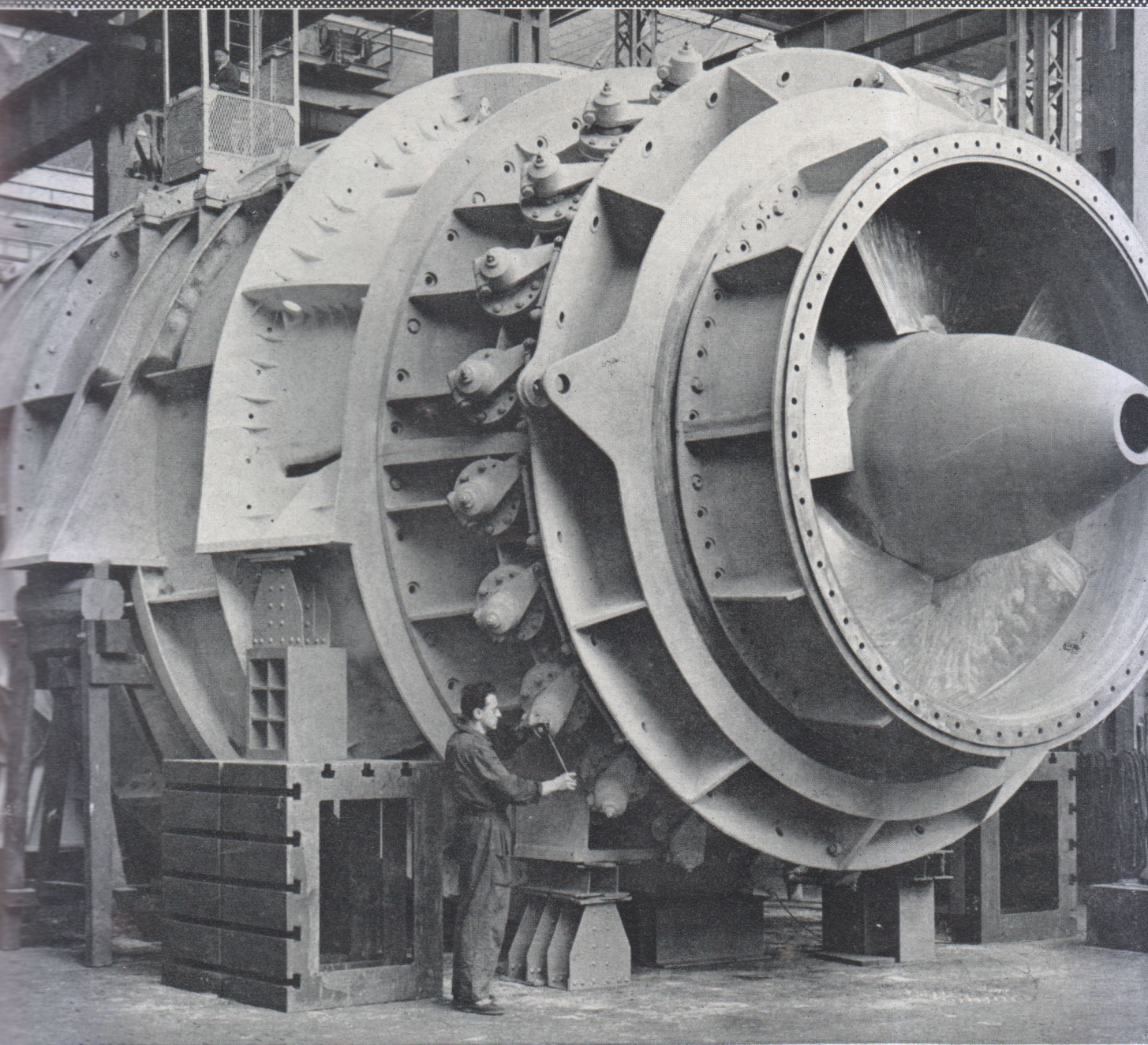


Outside United States contact Allis-Chalmers International, or in Canada, contact Canadian Allis-Chalmers

SOCIETA' ADRIATICA DI ELETTRICITA'

S. FLORIANO NUOVA POWER STATION

ONE-12,500 h.p. AXIAL-FLOW TURBINE
HEAD 16.5 m. RECENTLY COMMISSIONED



THREE SIMILAR AXIAL-FLOW PUMP-TURBINES ARE UNDER
CONSTRUCTION FOR **KHASHM EL GIRBA SCHEME** (SUDAN)



COSTRUZIONI MECCANICHE RIVA

VIA STENDHAL 34

MILANO

ITALY